



Welcome to Our Company

“Be yourself” At PRS Global Education, we believe every one is unique, every person should have a dream and to achieve that dream- we are here for you. Every person is a maven in a different way, and to unleash that talent we strive hard. Your idiosyncrasy is your real strength that makes you stand out from the rest. And we, at PRS Global Education, are trained to channelize that skill into shaping up their future securely.





Who Are We

PRS Global Education specializes in career orientation programs for schools. We're a team of educators and counselors passionate about guiding students toward fulfilling careers. Our program equips students with essential skills and resources to make informed career decisions. We aim to inspire the next generation to reach their full potential in an evolving world.



Mallishatty Srikanth

CEO & Founder

PRS Global Education



PROJECT

INNOVATION IN EDUCATION:

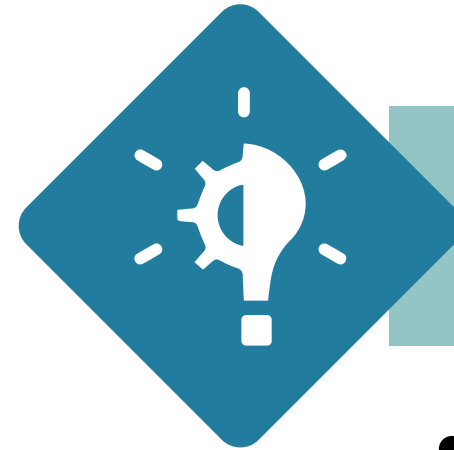
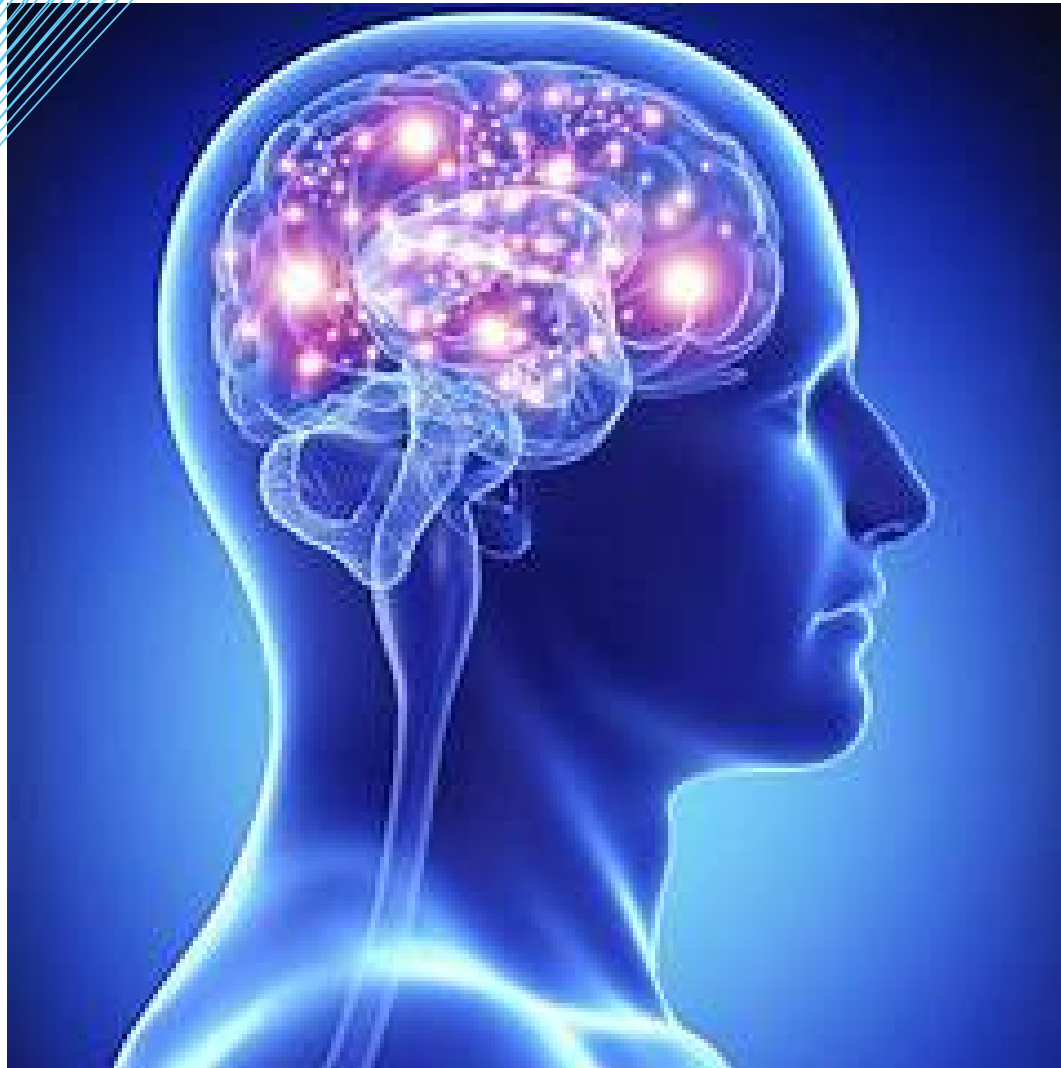
DMIT AS A TOOL FOR SELF-DISCOVER

About DMIT

Dermatoglyphics Multiple Intelligence Test (DMIT) is a method that analyses fingerprints to supposedly assess an individual's innate potential and cognitive abilities. To create a world where every student feels empowered to pursue their unique passions and reach their full potential.



Vision And Mission



Our Vision

- The vision for DMIT fingerprint is to utilize unique fingerprint patterns to tailor education, guide careers, and optimize team dynamics based on individuals' innate strengths and talents.



Our Mission

- Empower students to discover their strengths, interests, and learning styles through a combination of evidence-based assessments, exploration activities, and self-reflection.

Understanding DMIT

Fingerprint Analysis

DMIT analyzes the unique patterns in a person's fingerprints to identify their innate abilities and cognitive preferences.

Multiple Intelligences

The test maps an individual's predominant intelligences, such as visual, auditory, or kinesthetic, to guide personalized learning and development.

Holistic Approach

DMIT considers the whole person, providing insights into a student's personality, talents, and potential for growth.

PRS Global Education



1 IDENTIFY STRENGTHS

DMIT helps students uncover their natural talents and inclinations, empowering them to make informed educational and career choices.



Unrecognized Genius is a curse !



Know your Strength & weakness by DMIT Test Report based on Dermatoglyphics & brain analysis.

<http://www.brain-mappers.co>
brainmappers@gmail.com



2 DEVELOP POTENTIAL

By understanding their unique learning styles, students can tailor their study habits and activities to maximize their growth and achievement.



3 ENHANCE MOTIVATION

DMIT-driven self-awareness fosters intrinsic motivation, as students feel more engaged and empowered in their educational journey.



4 REDUCE STRESS

Knowing one's strengths and optimal learning approaches can help students navigate academic challenges with greater confidence and resilience.



Leveraging DMIT in Educational Settings



- 1 Personalized Curriculum**

Educators can design personalized lesson plans and teaching methods to cater to the diverse learning needs of students.
- 2 Targeted Interventions**

DMIT insights can guide the implementation of tailored support and enrichment programs for students of all ability levels.
- 3 Collaborative Learning**

By understanding their peers' strengths, students can engage in more effective teamwork and problem-solving activities.

EMPOWERING STUDENTS THROUGH DMIT



Self-Awareness

DMIT helps students develop a deep understanding of their unique traits and capabilities.



Confidence

Knowing their strengths boosts students' self-belief and empowers them to pursue their goals.



Motivation

DMIT-informed learning experiences foster intrinsic motivation and a love of learning.



Achievement

Personalized learning pathways enable students to reach their full potential and excel.

DMIT Report- For Age 5-13Years

What Will You Get?

- Detailed Personality Report of 75 Pages.
- Personalized Session with a Certified Senior Career Mentor.
- Assist Parents to know their child better.
- Parenting Tips exclusively for your child.
- Suitable Career Option based on Natural Strength.

Quantitative Risk Assessment

- Identify the Personality type of your child
- Know their Child's Innate Potential in terms of their Strength.
- Preferred Learning Style.
- Personality type of child.
- Multiple Intelligence the child & How you can nurture it

Dynamic Risk Assessment

- Learn Positive Parenting
- Personality development of child
- Better relationship with your child
- Raise a confident & Smart child
- Give your child a Happy Life

DMIT-DRIVEN PERSONALIZED LEARNING APPROACHES

Assessment

Conduct DMIT assessments to understand students' unique cognitive profiles and learning preferences.

Curriculum Design

Develop tailored lesson plans, teaching methods, and learning materials that cater to each student's strengths.

Ongoing Adaptation

Continuously monitor student progress and adjust learning approaches to ensure optimal growth and engagement.

CONCLUSION

THE FUTURE OF DMIT IN EDUCATION

As the education landscape evolves, DMIT will become an increasingly valuable tool for unlocking the full potential of every student, paving the way for a more inclusive, personalized, and transformative learning experience.





THANK YOU



www.prsglobaleducation.com

+91 77023 29044 , +91 8121026138

📍 First Floor 102, 1st-Floor West Wing,
Green Chambers, Vasavipuram,
Chinthalkunta, LB Nagar, Hyderabad,
Telangana 500070